



# IMAGERY BASEMAPS

 DATA SHEET

## Enhance your product with Vivid, Metro and Dynamic imagery basemaps.

When you rely on maps to make decisions about your community or serve your customer base, you need content that meets your requirements. Maxar's Imagery basemaps—including Vivid, Metro and Dynamic—feature our latest innovations in image mosaicking, color balancing and visual enhancement to provide stunning image layers available off the shelf, plus the flexibility to build on demand to offer the best possible currency.

Imagery basemaps provide a stunning, virtually seamless, high-resolution image layer to support mapping, visualization and analytics. Spend less time processing data and more time perfecting your end product.

### Features and benefits

#### Vivid

- With worldwide coverage and flexible access options for simplified integration, Vivid ensures high-resolution coverage of your AOI.
- Ongoing updates with new imagery supports currency and accuracy.
- Optimal aesthetics provide users a view of the world as they expect to see it.

#### Metro

- Metro is a premium quality image layer of the most populated areas on Earth, updated each year.

- Predictable delivery and reliable quality supports product consistency—you'll always know when your area will be refreshed with new imagery.
- Access options ensure an integrated solution that fits your workflow.

#### Dynamic

- Dynamic offers on-demand access to our most current, high-resolution image layer of your area of interest.
- Option for quarterly updates ensures you always have the most current view of the ground possible.
- Advanced processing enables rapid production and delivery.

### PREMIUM CONTENT TO MEET YOUR NEEDS

At 50 cm or better, Maxar imagery offers the clarity needed to:

- Extract building and road features
- Assess use and health of the landscape
- Identify change over time

### TOKYO, JAPAN



See across large areas with Vivid (top) or focus on the activity in your city with Metro (bottom).

# MAXAR

## Specifications

	<b>VIVID</b> Imagery basemap with optimal quality at a global scale	<b>METRO</b> Premium image basemap over high-interest areas across the globe	<b>DYNAMIC</b> A configurable image basemap over customer defined areas available on demand
<b>Coverage</b>	Global landmass (excludes Greenland and Antarctica)	6,000 metro areas	Anywhere, on demand
<b>Product type</b>	Orthomosaic		
<b>Image bands</b>	3-band pan sharpened RGB (all products) or 4-band pan sharpened BGRN (Vivid Standard and Dynamic only)		
<b>Product GSD</b>	50 cm	3,000 30 cm HD, 3,000 50 cm	30 cm HD-15 m
<b>Accuracy</b>	<5 m CE90 (standard) <8.5 m CE90 (2.0)	<4.2 m CE90, <10.2 m CE90	<5 m CE90, <10 m CE90
<b>Cloud cover</b>	<2% globally (standard) <5% globally (2.0)	Cloud free most areas	<5% target
<b>Off nadir angle</b>	<30 degrees most areas	<30 degrees	<30 degrees
<b>Sun elevation</b>	>30 degrees most ares	>30 degrees most areas	>30 degrees
<b>Bit depth</b>	8		
<b>Projection/ datum</b>	Geographic/WGS84	UTM/WGS 84	Geographic/WGS84
<b>Image age</b>	Average <24 months target	<12 months most areas	Best available or customer defined

## Image layer updates

	<b>VIVID</b>	<b>METRO</b>	<b>DYNAMIC</b>
<b>Updates</b>	Annual		Optional (none, annual or quarterly)
<b>When can I see new images?</b>	Online: as soon as the imagery basemap is completed (Vivid 2.0 and Metro only) Offline: per the delivery schedule		Offline: per the delivery schedule

## DELIVERY FORMATS

- Vivid: JPEG compressed GeoTiff
- Metro: uncompressed GeoTiff
- Dynamic: JPEG compressed GeoTiff

On request, individual or bundled imagery basemaps can be formatted as a tile cache.

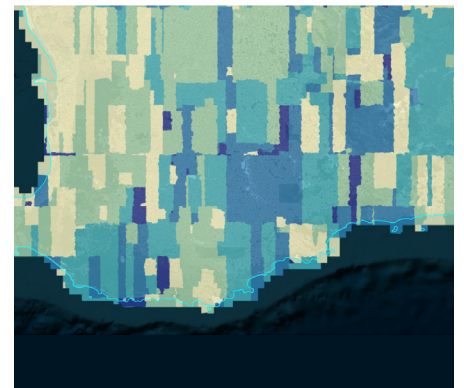
## PRODUCT FILES AND METADATA

Imagery basemap deliveries include a detailed seamline shapefile and source image metadata, including the acquisition date, off-nadir angle and sensor.

## ACCESS

All imagery basemaps are available for delivery via FTP, AWS S3 or hard drive. Vivid and Metro imagery basemaps are also available as subscriptions with access via MyDigitalGlobe, our ImageConnect plug-in or web services APIs (WMS, WMTS, WCS, etc)

## PERTH, AUSTRALIA



See the most current view of the ground with a Dynamic image layer (top), and the vintage map of the Dynamic image layer shows you the collection year of the images used in the imagery basemap (bottom).

# MAXAR